

## **SILVERLINE**

Amidst the San Juan Mountains of Telluride, Silverline brings the comforts of a true home to the heart of Mountain Village. Its perfect location at the base of the gondola station offers majestic panoramic views over the natural landscape, complete solar exposure through floor-to-ceiling windows, and convenient access to an array of retail and dining options. A carefully conceived selection of five-star services and amenities accommodates everything you and your family desire:

- Gondola access to town of Telluride or directly to the Market at Mountain Village
- All season rooftop pool, hot tub and lounge area with expansive terrace
- Family Recreation Center featuring indoor water park, arcade, bowling alley, climbing wall and other exciting attractions
- Business center with fully equipped conference room for private meetings
- Fitness center featuring ultramodern weight and cardio equipment
- Absolute ski-in/ski-out access at your doorstep
- Media and game room with theater seating
- Valet and luggage service
- Underground parking
- Full staffed reception desk and optional rental management program

## **RESIDENCE FEATURES**

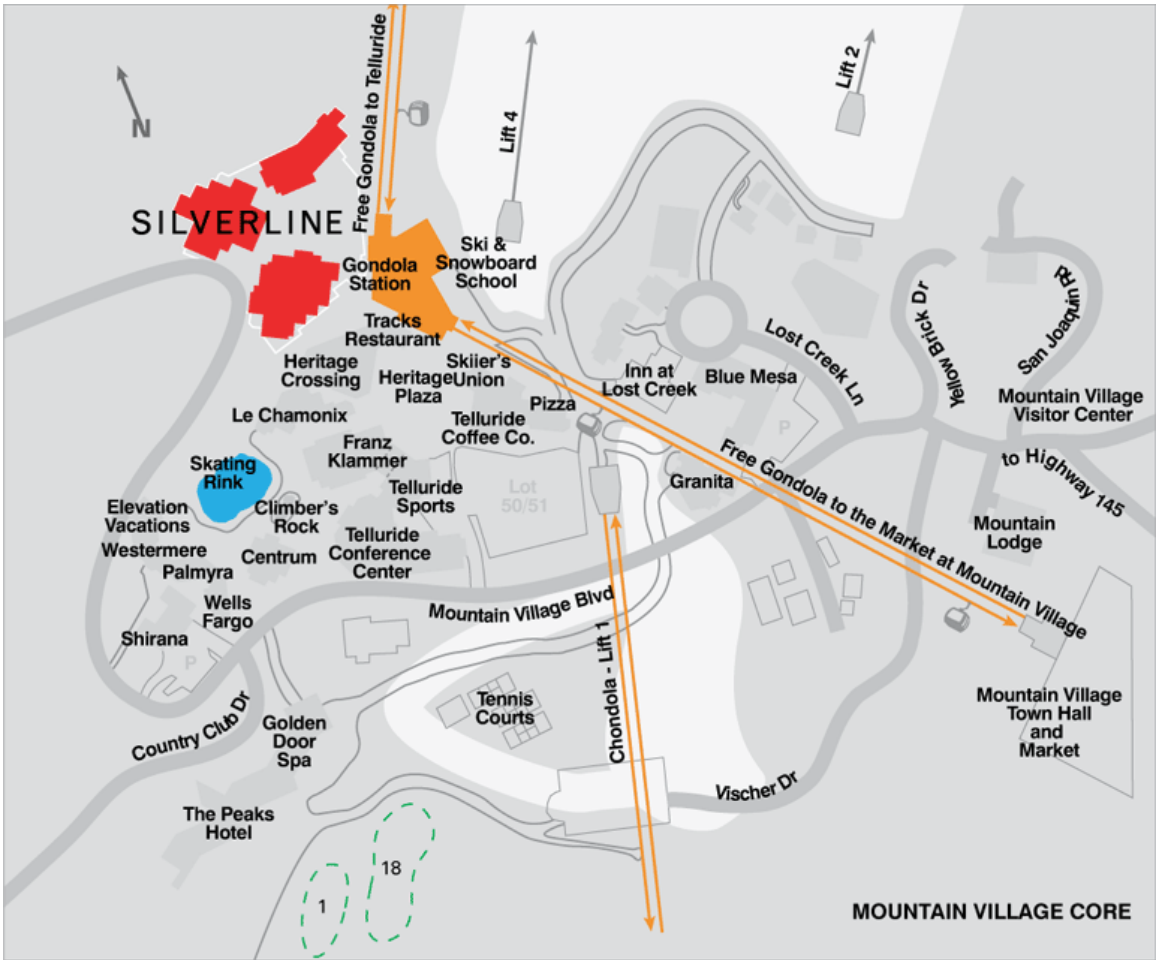
- Residences ranging in size from 1,400 to more than 6,000 SF
- Home automation system with controls for lighting, music, television and temperature (select residences only)
- Optional furniture packages available
- Gourmet kitchen with premium appliances
- Tranquility Room provides a serene escape (select residences only)
- Expansive terraces and balconies with private hot tubs (select residences only)

SILVERLINE

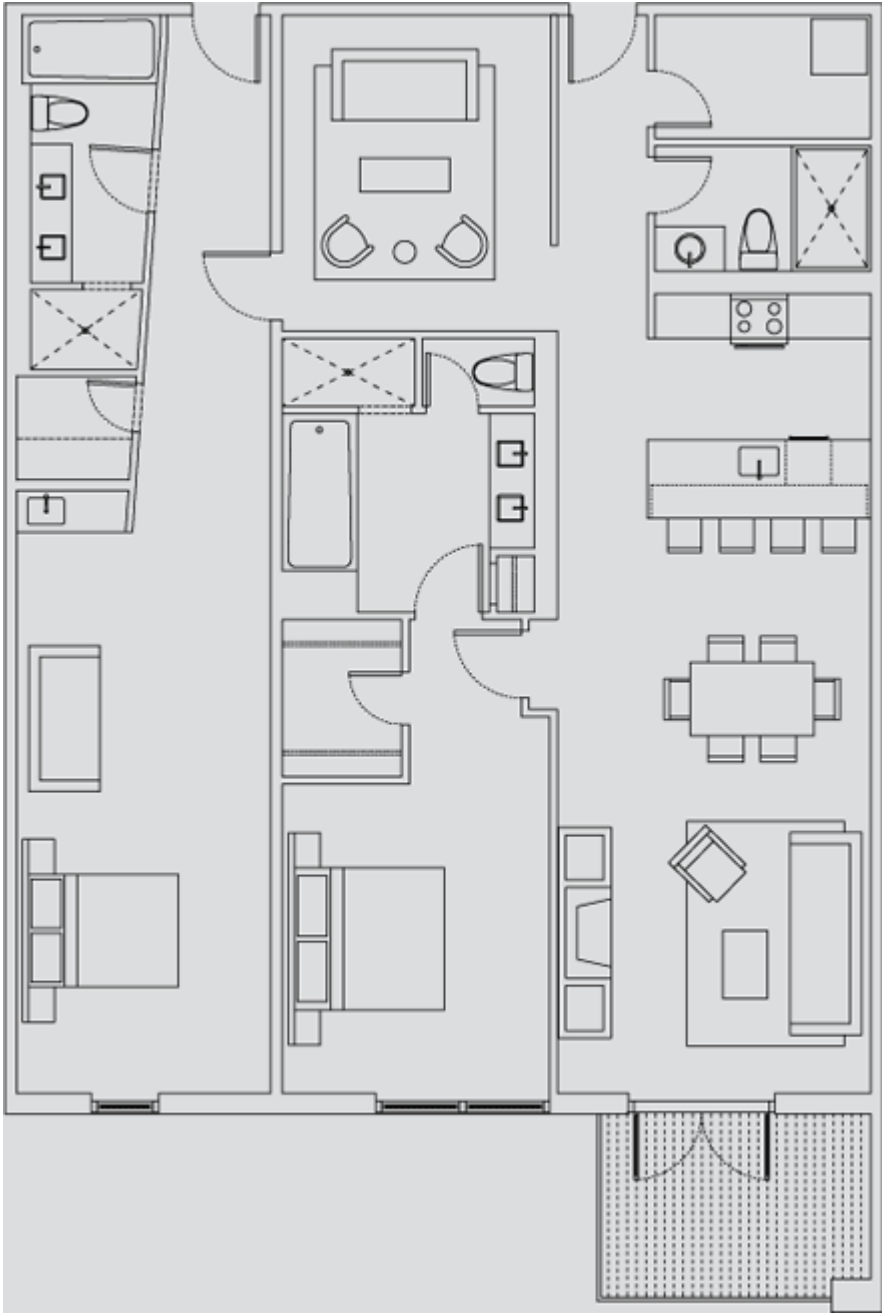
TELLURIDE

COLORADO





Location Map



Floor Plan 1



Floor Plan 2